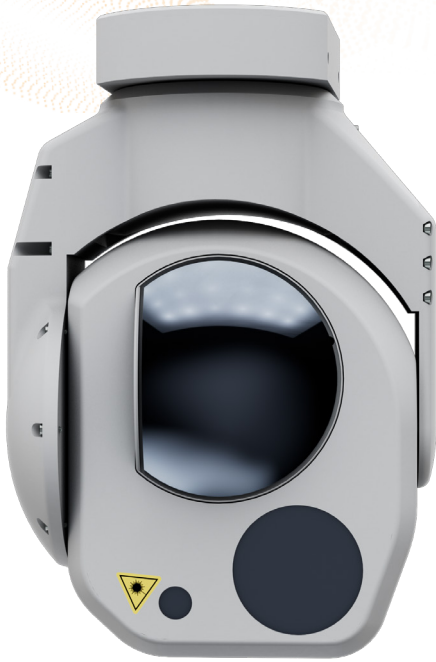


## MAXIMUM OPTICS. MINIMUM SWAP-C. PURPOSE-BUILT FOR GROUP 1, 2, AND LE.



**HD45-LV-R**



**SUPERIOR OPTICS**

Increased IR sensitivity provides sharper imagery



**ITAR FREE**

Non-controlled configurations



**HD DIGITAL VIDEO**

Fully digital, h.264-compliant video pipeline



**ENVIRONMENTALLY SEALED**

IP65 rated for protection against dust and water



**EMBEDDED VIDEO PROCESSING**

Electronic stabilization and scene tracking



**ROBUST DESIGN**

Capable of withstanding high impact forces

### TRACKING

- Onboard scene tracking
- Onboard geo tracking
- Optional target tracking with external module

### GEOLOCATION

- IMU co-located with cameras
- 1.5° (typical) total system accuracy
- Real time geointing and geolocation
- Onboard GPS receiver or platform provided GPS compatible

### ELECTRICAL

- Control over Ethernet or serial
- 15W average, 75W peak power consumption
- 24VDC regulated input, external regulation accepting 10V to 30V available

### MECHANICAL

- Pan: 360° Continuous
- Tilt: -80° to 42°
- 0.02° encoder resolution

### SOFTWARE

- Onboard h.264 compression with adjustable bitrate
- MISB-compliant output including embedded KLV metadata
- Field upgradeable software
- Onboard electronic stabilization
- Ethernet video

### CAMERA CONFIGURATIONS

CONFIGURATION	WEIGHT	DIMS (W X H)	CAMERAS	FOV/DFOV	ZOOM (O+D)	LASER*
HD45-LV-CZ-GS	1375g 3lbs	133 x 197mm 5.24 x 7.75in	Visible 1280 x 720 <sup>1</sup> LWIR 640 x 512	46.8° - 4.9° - 1.2° 29° - 5.9° - 3°	40X (10x+4x) 10X (5x+2x)	LP
HD45-LV-R	885 1.95lbs	134 x 197mm 5.28 x 7.75in	Visible 1280 x 720 <sup>1</sup> LWIR 640 x 512	46.8° - 4.9° - 1.2° 24.1° - 7.3° - 3.7°	40X (10x+4x) 6X (3x+2x)	LP

<sup>1</sup>Global Shutter

\*Options available