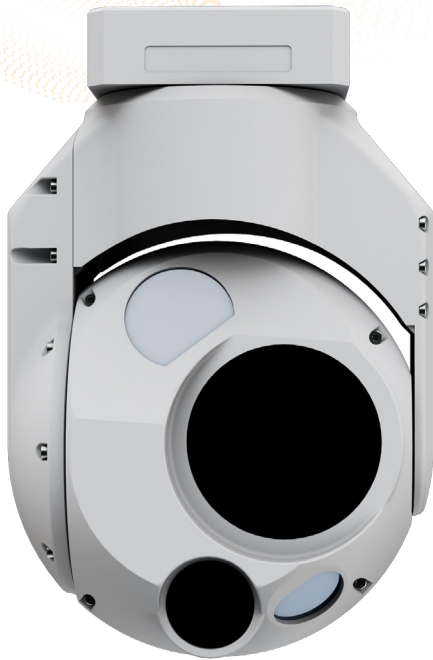





LIGHTWEIGHT POWER. NEXT-LEVEL OBJECT ID





HD40-LVV


- 

ENVIRONMENTALLY SEALED
IP65 rated for protection against dust and water
- 

SUPERIOR OBJECT ID
Delivers unmatched EO identification range in its class
- 

SUPERIOR SWAP-C
Optimized for size, weight, power, and cost efficiency
- 

INTEGRATED AI PROCESSING
Instant real-time detections with the 40-LVV
- 

ITAR FREE
Non-controlled configurations
- 

ROBUST DESIGN
Capable of withstanding high impact forces

TRACKING

- Onboard scene tracking
- Onboard geo tracking
- Onboard target tracking

GEOLOCATION

- IMU co-located with cameras
- 1.5° (typical) total system accuracy
- Real time geointing and geolocation
- Onboard GPS receiver or platform provided GPS compatible

ELECTRICAL

- Control over Ethernet or serial
- 15W average, 75W peak power consumption
- 24VDC regulated input, external regulation accepting 10V to 30V available

MECHANICAL

- Pan: 360° Continuous
- XV Tilt: -80° to 28°
- LVV Tilt: -80° to 45°
- 0.02° encoder resolution

SOFTWARE

- Onboard h.264/h.265 compression with adjustable bitrate
- MISB-compliant output including embedded KLV metadata
- Field upgradeable software
- Onboard electronic stabilization
- Ethernet video

CAMERA CONFIGURATIONS

CONFIGURATION	WEIGHT	DIMS (W X H)	CAMERAS	FOV/DFOV	ZOOM (O+D)	LASER*
HD40-XV	840g 1.9lbs	98 x 151mm 4 x 6 in	Visible 1280 x 720 ¹	47.7° - 1.7° - 0.4°	112X (28x+4x)	
HD40-LVV	750g 1.7lbs	102 x 152 mm 4 x 6 in	Visible 1920 x 1080 LWIR 1280 x 1024	45° - 1.5° - 0.3° 18.2° - 4.6°	180X (30x+6x) 4X (1x+4x)	LP

¹Global Shutter

*Options available